

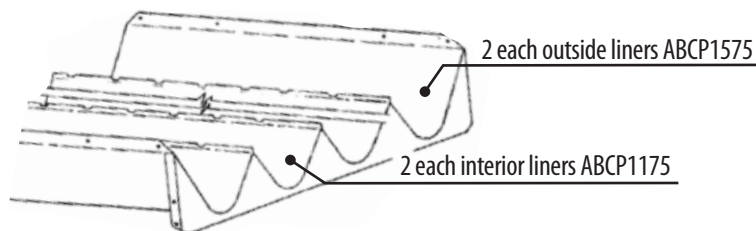
PLEASE READ THE ENTIRE INSTRUCTION SHEET BEFORE STARTING INSTALLATION.

PLEASE REFER TO THE OPERATORS MANUAL FOR YOUR SPECIFIC COMBINE FOR PERTINENT SAFETY PRECAUTIONS THE TERMS. "LEFT", "RIGHT", "FRONT", & "REAR" ARE DETERMINED BY FACING IN THE DIRECTION THE COMBINE WILL TRAVEL WHEN IN USE.

IMPORTANT:

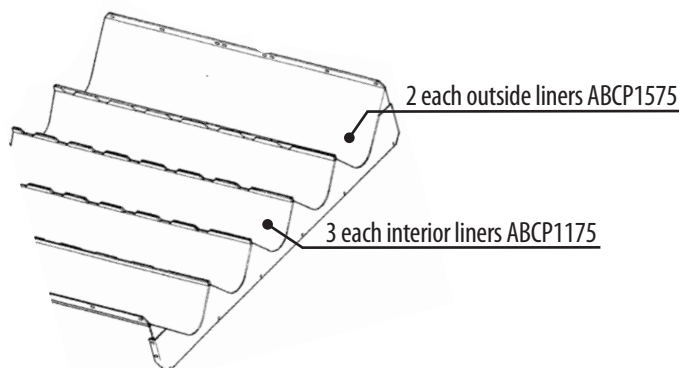
Before you begin installation, compare the contents with the enclosed "Packing Slip" to confirm that you have received the correct panels and associated hardware for your model header. Please refer to the operators manual for your specific combine for pertinent safety precautions.

FOUR AUGER KIT: Combine Model: 1440, 1460, 1470, 1640, 1644, 1660, 1666, 2144, 2166, 2344, 2366



Stainless Hold Down Strip ABCD53 2 each per trough

FIVE AUGER KIT: Combine Model: 1480, 1482, 1680, 1682, 1688, 2188, 2377, 2388, 2577, 2588



Stainless Hold Down Strip ABCD53 2 each per trough

Visit us online at www.lundellplastics.com to see other innovative products!

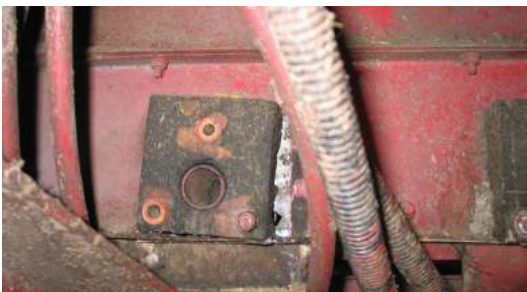
Case Auger Bed Trough Liner EXOPLATE INSTALLATION INSTRUCTIONS



1. Remove the concaves above the auger bed to obtain additional work room.



2. Thoroughly clean each auger trough to remove all grain, dust and crop residue.



3. Remove the front bearing block mounting bolts.

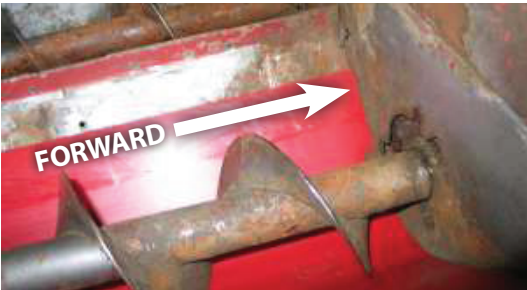


4. Raise the front of the auger and insert the liner as illustrated.

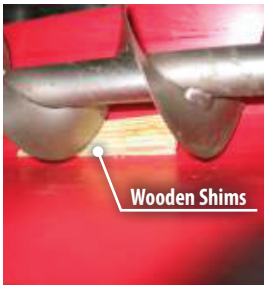
Visit us online at www.lundellplastics.com to see other innovative products!



5. Re-install the bearing block mounting bolts. *Important: Excessively worn bearings must be replaced to avoid damage to the liner.*



6. Slide the liner forward until it makes contact with the front of the auger trough. Position the liner so that it best fits the contour of the trough and is parallel with the upper edge of the trough.

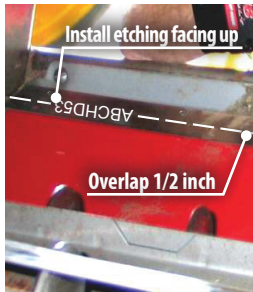


Wooden Shims



Approximately 1 inch

7. With the auger bearing secured and the liner properly aligned with the trough, wedge the liner against the bottom of the trough with the wooden shims supplied.
Note: the liner has been designed to extend approximately 1 inch beyond the rear end of the trough



Install etching facing up

Overlap 1/2 inch

8. Position one of the hold down strips so that the etching is facing up and it is overlapping the liner 1/2 inch. While holding the hold down strip in position, fasten the strip in the center hold with one of the self drilling screws supplied.



Stainless Hold Down Strip ABCHD53 etching

Case Auger Bed Trough Liner EXOPLATE INSTALLATION INSTRUCTIONS



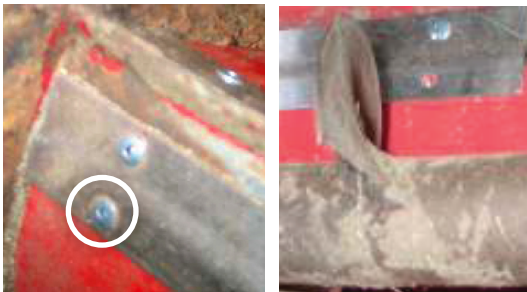
NOTE: Two types of rivets have been supplied to secure the metal stripes. the steel rivet is recommended for its added strength and abrasion resistance. An aluminum rivet has also been supplied for those do not have a rivet gun capable of pulling a 3/16 inch steel rivet with a steel mandrel:

- **AH 105 3/16" x 1/4" steel rivet** (See instruction sheet)
- **AH 106 3/16" x 1/4 aluminum rivet** (See instruction sheet)



9. Confirm that the hold down strip is still parallel to and overlapping that liner 1/2 inch along its entire length. Working from the center outward, drill and rivet the strip using the 13/64 inch drill bit supplied. Install a rivet in each hole before drilling the next one.
10. Secure the other side of the liner with a second hold down strip using the same procedure as described in Steps 8 and 9.
11. To complete the installation, drill and rivet the bottom hold on the front end of both hold down strips. Remove the wooden ship from Step 7.

When using power tools, basic safety precautions should always followed to reduce the risk of personal injury. **WEAR SAFETY GLASSES OR GOGGLES.**



12. Install the remaining liners using the same procedure.

WARNING Proper application, installation, and operation of any machine and/or installation incorporating products sold by Lundell Plastics Corporation™ is the responsibility of the purchaser and/or end user. All local, state, and federal safety codes must be followed. Lundell Plastics Corporation™ is specifically not responsible for property damage and/or personal injury, direct or indirect, for damages and/or failures caused by improper design, application, installation, operation, abuse, and/or misuse of its' products. Conveyors must never be installed, readied for operation, or operated without proper covers and guards installed and securely in place.

Visit us online at www.lundellplastics.com to see other innovative products!